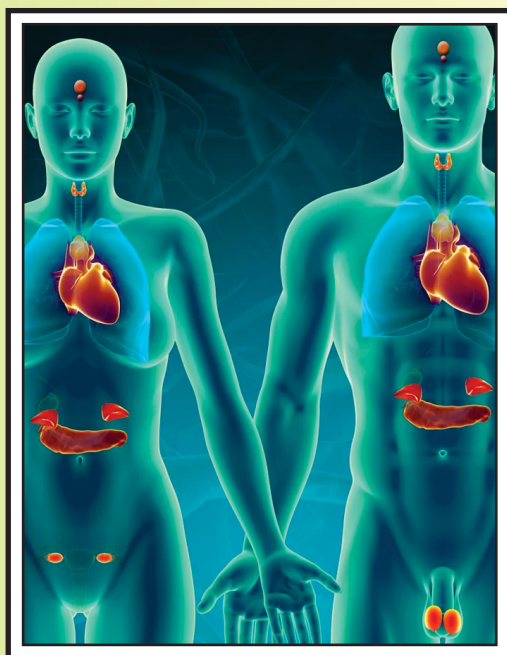


MOHSIN
DEHLVI



DEHLVI SPECIALITY SERIES-10

ENDOCRINE SYSTEM



DISORDERS



Dehlvi

Nature is our Laboratory

Dehlvi

The endocrine system encompasses several glands in different parts of the body. These glands secrete directly into the bloodstream and affect various important functions. Hormones secreted by the endocrine glands work as chemical messengers of the body. The delicate balance of endocrine secretions can be disturbed by stress, infection as well as other factors.

Endocrine system disorders occur either due to too much or too little or sometimes no hormone. These disorders may lead to abnormal growth pattern, osteoporosis, diabetes, high cholesterol and triglyceride levels and thyroid malfunction. The most common endocrine system disorder is Diabetes. Other endocrine system disorders include hyperthyroidism, hypercalcemia, growth hormone deficiency, Addison's disease, Cushing's Syndrome, hypothyroidism and Polycystic Ovary Syndrome (PCOS). Endocrine disorders can be triggered by tumors, steroid medications or autoimmune problems. A person suffering from a disorder caused by any of the malfunctioning endocrine glands may notice change in weight, change in libido, mood swings, increased fatigue and thirst or urination.

Endocrine disorders are caused due to malfunctioning endocrine glands. In some cases, the gland produces in excess while in others there is insufficient activity of the gland. Inadequate secretion of endocrine glands (hypofunction) can be attributed to malformations or disease or injury. Excessive production of hormones (hyperfunction) is usually caused by glandular tumors or auto immune reactions. Endocrine disorders are treated with hormone replacement in cases of inadequate production. In cases of excessive production of hormones, the abnormal gland tissues are removed.

In modern system of medicine, treatment for endocrine disorders generally fall into two categories: Medication – If there is too much or too little of a certain hormone in the body, synthetic hormones like Antithyroid Agents, Enzyme Inhibitors, Hypoglycemic Agents, Insulin, Dihydrotestosterone, Methimazole may be administered to correct the imbalance and reduce symptoms. Chemotherapy may also be used to treat patients with cancer of an endocrine gland.

These drugs are effective but have a number of side effects. In chronic cases, the treatment is obviously prolonged. The herbal system has a number of medicines that not only provide symptomatic relief but attacks the root cause without any known side effects. Dehlvi has many useful preparations to treat endocrine system disorders.

Amla Aloevera Karela Jamun Ras

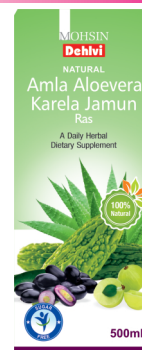
With all the efficacies of Amla, Aloevera, Jamun and Karela, it regulates blood sugar and sugar metabolism, and allays unquenchable thirst of diabetes.

Composition: Each ml contains: Emblica officinalis (Amla) 54.81%, Aloevera (Gheekwar) 19.93%, Momordica charantia Seed (Karela) 12.46%, Eugenia jambolana Seed (Jamun) 12.46%

Indications: Diabetes and unquenchable thirst.

Dosage: 20 ml twice daily. 20-30 ml of water can be added according to taste.

Presentation: In PET bottles of 500 ml.



DiabEaze

Diab-Eaze is a comprehensive herbal formulation containing time-tested and anti-diabetic herbs that have been recommended for more than 5000 years in Ayurveda and Unani system. These medicinal herbs make Diab-Eaze a comprehensive approach to the management of diabetes mellitus. It balances blood sugar levels, thereby reducing or removing the need for insulin or hypoglycemic medication. Furthermore, it reduces cravings for sweet foods, improves circulation, especially to the feet and hands and improves blood flow to optic nerves to prevent diabetes-related eye diseases. It also helps promote symptomatic relief of complaints like weakness, giddiness, pain in legs, body ache, polyuria and pruritis. Diab-Eaze does not contain any form of sulfonamides or biguanides (often found in allopathic drugs). It makes it possible to avoid the side effects most current with these products (skin problems or excessive lactic acid).



Composition: Each 500 mg. capsule contains : Nymphaea lotus Nilotphal), Trigonella foenum-graecum Ext. (Methi), Momordica charantia Ext. (Karela Beej), Tinospora cordifolia Ext. (Gilo), Eugenia jambolana Ext. (Jamun Gutli), Gymnema sylvestre Ext. (Gurmar), Ficus racemosa Ext. (Gular Chhal), Cinnamomum zeylanicum (Dalchini) each 50 mg, Asphaltum (Shilajit) 100 mg.

Indications: Diabetes Insipidus, Diabetes Mellitus, Glycosuria, Incontinence and Polyuria.

Dosage: 2 capsules two or three times a day, depending on severity of symptoms. Dosage can be reduced once blood sugar levels stabilise.

Presentation: In packs of 30 capsules and 60 capsules.



Nature is our Laboratory

Eazy Heal Capsules

It is useful in moist form of gangrene occurring in persons with diabetes mellitus, often following a minor injury.

Composition: Each 500 mg. capsule contains: Peppermint Oil (Peppermint Tel) 1 ml, Acacia arabica (Kikar Gond) 1 mg, Sandal Wood Oil (Sandal Tel) 2.5 ml, Potassium Carbonate (Jawakhar) 3 mg, Pinus longifolia (Behroza) 4 mg, Vateria indica (Raal Safed) 10 mg, Elettaria cardamomum (Choti Elaichi), Alumen (Phitkari), Cuminum cyminum (Jeera) each 20 mg, Piper cubeba (Kababchini) 53 mg, Bambusa arundinacea (Bansalochan) 165.5 mg, Red Ochre (Geru Lal) 200 mg.

Indications: Kidney and urinary bladder stones, kidney gravel, burning micturition, and water retention.

Dosage: 1 capsule twice daily with plenty of water.

Presentation: In packs of 60 Capsules.



Karela Jamun Ras

Karela and Jamun are well known herbs to regulate blood sugar level. This unique combination is useful in regulating blood sugar levels and keeps body functions operating normally. It has an action similar to insulin thus helping in glucose metabolism. It Allays the unquenchable thirst of diabetes and increases the immunity system. It also cleanses the toxins from blood and liver.

Composition: Each ml contains: Momordica charantia Seed (Karela) 49.825% and Eugenia jambolana Seed (Jamun) 49.825%

Indications: Blood Impurities, Diabetes, Glycosuria, Low Immunity and Unquenchable Thirst of Diabetes.

Dosage: 10-15 ml twice a day. Add 10-20 ml water according to taste.

Presentation: In PET bottles of 500 ml.



Shugreen Powder

Shugreen is a comprehensive herbal formulation containing time-tested and anti-diabetic herbs that have been recommended for more than 5000 years in Ayurveda and Unani system. These medicinal herbs make Shugreen a comprehensive approach to the management of diabetes mellitus. It balances blood sugar levels, thereby reducing or removing the need for insulin or hypoglycemic medication. Furthermore, it reduces cravings for sweet foods, improves circulation, especially to the feet and hands and improves blood flow to optic nerves to prevent diabetes-related eye diseases. It also helps promote symptomatic relief of complaints like weakness, giddiness, pain in legs, body ache, polyuria and pruritis.



Purity Assured



Composition: Each 10 g contains: Iron Calx. (Kushta Faulad), Black Salt (Namak Siah), Santalum album (Sandal Safed) 200 mg, Pterocarpus marsupium (Chob Bijyasar), Sonalum nigrum (Mako Khushk), Cichorium intybus (Tukhme Kasni) each 700 mg, Melia azadirachta (Tukhme Neem), Syzgium cumini (Maghze Jamun), Momordica chirantia (Tukhme Karela), Wrightia tinctoria (Indarjao Shirin), Swertia chirata (Chiraita Talkh), Swertia angustifolia (Chiraita Shirin) each 1 g, Gymnema sylvestre (Gurmar Booti) 1.5 g

Indications: Diabetes Insipidus, Diabetes Mellitus, Glycosuria, Incontinence and Polyuria.

Dosage: 5 g in the morning and at night with water.

Presentation: In packs of 100 g.

ThyroCap

It is a synergistic herbal blend designed to feed, nourish and balance the thyroid gland. It treats hypo/hyper thyroid diseases and glandular enlargements. It has a balancing activity on the thyroxine production; increasing any deficient production and decreasing any excess – helping you to maintain optimal weight, neuromuscular tone and cardiovascular health.

Composition: Each 500 mg. capsule contains: Elettaria cardamomum (Elaichi Choti), Cinnamomum zeylanicum (Darchini), Cinnamomum tamala Leaf (Tejpat) each 3 mg, Nepeta cataria (Badranjboya), Piper longum (Pipal), Piper nigrum (Kali Mirch), Zingiber officinale (Sonth) each 12 mg, Emblica officinalis (Amla), Terminalia belerica (Bahera), Terminalia chebula (Harad), Withania somnifera (Ashwagandha) each 23 mg, Bauhinia variegata (Kachnar) 100 mg, Commiphora mukul Purified (Guggul) 125 mg, Acacia speciosa (Siras) 125 mg

Indications: Hypo/hyper thyroid diseases and glandular enlargements

Dosage: In acute cases 2 capsules 30 minutes before lunch and dinner. In chronic cases 1 capsule 30 minutes after lunch and dinner. To be continued for a month even when the TSH level becomes normal.

Presentation: In strip packs of 60 Capsules.



SINGLE HERBS

Gurmar Capsules

This herb has been given the name 'gur-mar' meaning 'sugar destroyer' because of its property of abolishing the taste of sugar. It has the unique property of inhibiting the taste of sugar. When Gurmar is taken before eating, the molecules of one of its constituents, gymnemic acid (whose molecular structure is similar to that of sugar), fill the sugar-taste receptor sites on the tongue for one to two hours, thus preventing the taste buds from reacting to the sugar molecules in food and blocking the taste of sugar. It blocks up to 50% of the absorption of sugar. In doing so, it will not affect the taste of food but will suppress the desire of sweets. This is one of the main herbs



Nature is our Laboratory

used for healing diabetes mellitus. It has been believed, therefore, that it might neutralise the excess sugar present in the body in diabetes mellitus. The leaves raise insulin levels in Type 2 (adult-onset) diabetes by regeneration of the cells in the pancreas that secrete insulin.

Composition: Each 250 mg. capsule contains: Gymnema sylvestre Ext. (Gurmar) 250 mg.

Indications: Diabetes mellitus, glycosuria, hypoglycemia and polyuria.

Dosage: 1 capsule twice daily before meals with water.

Presentation: In packs of 60 Capsules.

Karela Capsules

It purifies the blood and is useful in diabetes. At least three different groups of constituents in Karela Capsules have been reported to have hypoglycemic (blood sugar lowering) or other actions of potential benefit in diabetes mellitus. These have shown to significantly improve glucose tolerance without increasing blood insulin levels, and to improve fasting blood glucose levels. Blood and urine sugar levels and post-prandial (after eating) blood glucose levels also fall.

Composition: Each 250 mg. capsule contains: Momordica charantia Ext. (Karela) 250 mg.

Indications: Blood Impurities and Diabetes.

Dosage: 2 capsules daily in the morning.

Presentation: In packs of 60 Capsules.

Methi Capsules

Lowers blood sugar levels in Type 2 diabetes mellitus, reducing resistance to insulin and removing excess triglycerides in the blood. The fibre and saponins in Methi are known to lower elevated cholesterol and blood lipids, including in those with diabetes.

Composition: Each 500 mg. capsule contains: Trigonella foenum-graecum Ext. (Methi) 150 mg, Trigonella foenum-graecum Powder (Methi) 350 mg

Indications: Diabetes and High Cholesterol Levels.

Dosage: 2 or 3 capsules thrice daily before meals with water.

Presentation: In packs of 60 Capsules.

OTHER PROPRIETARY & GENERICS

Besides the above, Dehlvi manufactures a number of proprietary and generic medicines that are useful in Endocrine System Disorders. Some of them are : Jamun Ras, Jamun Sirka, Karela Ras, Kushta Baiza Murgh, Kushta Zamarrud, Majun Kundul, Majun Masikul Bol, Shilajit Capsules and Shilajit Care.