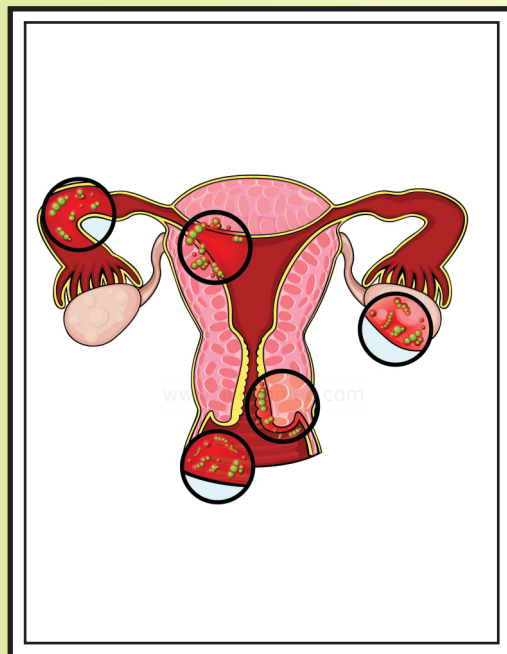


MOHSIN  
DEHLVI

DEHLVI SPECIALITY SERIES-1

# GYNAECOLOGICAL



# DISORDERS



Dehlvi

Nature is our Laboratory

**Dehlvi**

*Over 95 years of Tradition & Trust Continues*

Disorders that are peculiar to females are known as Gynaecological disorders. The chief disorders are associated with menstruation, vaginal discharge, diseases connected to pregnancy and childbirth, uterine disorders, ovarian disorders, prolapse of the uterus, menopause and infertility and frigidity. Virtually every woman will suffer a gynecological condition at some point in her life.

In modern system of medicine, the drugs often used in the treatment are oestrogens, progestogens, anabolic and androgenic steroids. etc.

These drugs are effective but have a number of side effects like nausea, vomiting, headache, dizziness, tenderness and enlargement of breasts. Steroids may produce masculinization in females. In chronic cases, the treatment is obviously prolonged. The herbal system has a number of medicines that not only provide symptomatic relief but attacks the root cause without any known side effects. Dehlvi has many useful preparations to treat Gynaecological disorders.

## Femone Capsules

It is a unique herbal blend that enhances sexual, mental and physical satisfaction by increasing blood flow to the female genitals. Sexual satisfaction is achieved, making physical and mental satisfaction more attainable and also stimulating vaginal lubrication, relaxing vaginal muscles and increasing sexual pleasure. Femone Capsules have been effective for women who report difficulty in achieving orgasm. It allows women to experience more pleasure during sexual activity after increasing sensitivity to areas of the female genital that are important in sex. It also increases intensity of orgasm and is also very useful in general lethargy and general debility.



**Composition:** Ambra grasea (Ambar) 5 mg, Anacyclus pyrethru Ext. (Aqarqarah) 15 mg, Crocus sativus (Zafran) 25 mg, Smilax china Ext. (Chobchini) 25 mg, Alpinia galanga Ext. (Khulanjan) 25 mg, Tribulus terrestris Ext. (Gokhru) 50 mg, Mucuna pruriens Ext. (Konch) 90 mg, Withania somniferum Ext. (Ashwagandha) 100 mg, Asparagus racemosus Ext. (Shatavari) 165 mg

**Indications:** Depressed libido, female sexual arousal disorder (FSAD), infertility, orgasmic dysfunction, dyspareunia (painful intercourse), vaginal dryness, general lethargy and general debility.

**Dosage:** 2 capsules at night with milk 1 hour prior to sexual activity and at least 1 hour after dinner. In cases of general lethargy and general debility, 1 capsule can be given once in the morning with water.

**Presentation:** In packs of 10 capsules.

## Femone Jelly

An all-natural blend of herbs that are useful in leucorrhoea and irregular menstruation. Increases the retentive power of the uterus. Also useful in pain of the joints and back. Increases sexual desire and removes general lethargy and general weakness. Also removes general debility after child birth.



**Composition:** Each 25 g contains: Camphor (Kafoor) 7 mg, Trachyspermum ammi (Ajwain), Salmalia malabarica (Mochras), Elettaria cardamomum (Elaichi Choti), Piper longum (Pipal), Mentha arvensis (Pudina), Cinnamomum cassia (Taj), Cinnamomum tamala (Tezpat), Cyperus rotundus (Nagar Motha), Mesua ferrea (Nagkesar) each 16 mg, Santalum album (Sandal Safed), Bambusa arundinacea (Tabasheer), Taxus baccata (Zarnab), Piper nigrum (Kali Mirch), Anogeissus latifolia (Gule Dhawa), Silver Leaf (Warq Nuqra) 38 mg, Cuminum cyminum (Zeera Safed), Zingiber officinale (Sonth) each 48 mg, Ricinus communis Root (Arandi), Piper longum Root (Pipla Mool), Triticum aestivum (Nishasta), Nyphaea lotus Sd. (Nilofar), Myrtus caryophyllus (Laung), Coriandrum sativum (Dhania), Nyphae lotus (Nilofar), Gossypium herbaceum (Binaula) each 64 mg, Trapa bispinosa (Singhara) 96 mg, Manilkara hexandra (Khirni), Sida cordifolia (Bala) each 107 mg, Buchanania lanzan (Chironji) 214 mg., Vitis vinifera (Munaaqqa) 322 mg, Asparagus racemosus (Shatavari) 1.876 g, Solidified Milk (Khoya) 2.050 g, Areca catechu (Supari) 2.493 g, Butter Milk (Ghee) 4.289 g, Sugar q.s.



*Nature is our Laboratory*

**Indications:** Leucorrhoea, backache, weakness of uterus, depressed libido, prolapse of the uterus, sterility, menorrhagia, vaginal laxation and vulvar itching.

**Dosage:** 10 g with a glass of milk in the morning.

**Presentation:** In packs of 250 g.

## Firm-Up Capsules & Lotion

**Capsules:** Promotes healthy breast tissue development. The ingredients have been selected and formulated for their estrogenic like qualities. The ingestion of these botanicals stimulates the body to replicate the process of the growing stage experienced during puberty. The mammary glands are re-awakened and new, healthy breast tissue develops, while existing tissue plumps out. FirmUP Capsules not only keep the breasts firm, they visibly enhance and uplift sagging breasts. Full-figured women with large or sagging breasts will report that breast size remains stable or increases with firmness. The process is natural, safe and highly effective and is non-hormonal.



**Lotion:** Promotes healthy breast tissue development. The ingredients stimulate skin tissue in the mammary glands and encourage it to start growing again. It not only keeps the breasts firm, but visibly enhances and uplifts sagging breasts. Full-figured women with large or sagging breasts will report that breast size remains stable or increases with firmness. The process is natural, safe and highly effective.

**Composition: Capsules:** Each 500 mg capsule contains: Pueraria tuberosa (Bilaiqand), Nepeta cataria (Billi Lotan), Carum carvi (Kala Jeera) each 50 mg, Trigonella foenum-graceum (Methi), Foeniculum vulgare (Saunf) 75 mg, Avena sativa (Jayee), Gossypium herbaceum (Binaula) each 100 mg.

**Lotion:** Each ml contains: Anthemis nobilis Oil (Babuna), Foeniculum vulgare Oil (Saunf), Trigonella foenum-graecum Oil (Methi), Ricinus communis Oil (Arandi), Glycyrrhiza glabra Oil (Mulethi), Aloe vera Juice (Gheekwar), Pueraria tuberosa Oil (Bidhari Qand), Prunus amygdalus Oil (Badam) each 5%, Base q.s.

**Indications:** Underdeveloped breasts and sagging breasts.

**Dosage/Usage: Capsules:** 2 capsules twice a day with meals along with a full glass of water. Results start showing in just 20 days. However, you shall experience full firmness in 3 to 6 months.

**Lotion:** Use your finger tip to take the required amount of cream for each breast. Apply and gently massage with your palm using circular motion and upward strokes for about 3 to 5 minutes or till the cream is fully absorbed. Massage gently with soft hands by moving your right hand clockwise and left hand counter clockwise in circular motion while massage and avoid touching nipples during massage. For best result, apply twice daily, in the morning & night.

Results start showing in just 20 days. However, you shall experience full firmness in 3 to 6 months. Results will vary person to person depending on several factors such as age, health conditions, genetics, etc.

**Presentation:** In packs of 28 Capsules and 40 ml.



## Habbe Hamal

It plays an important role for conception if sterility is caused by uterine atony, metritis or any other uterine disorder.

**Composition:** Each 250 mg silver coated pill contains: Areca catechu Nut (Fufal) 153.93 mg, Myristica fragrans Kernel (Jaiphal) 51.31 mg, Sugar (Qand Siah) 25.66 mg, Cannabis sativus (Berge Qinnab) 10.26 mg, Crocus sativus (Zafran) 5.13 mg, Myrtus caryophyllus (Launq) 2.57 mg, Papaver somniferum Latex (Afyun) 0.64 mg

**Indications:** Female Infertility

**Dosage:** 2 pills to be given with 250 ml. milk daily in the morning and evening for 3 days. On the 4th day sexual intercourse is recommended. Treatment is to be continued for two or more months or until conception occurs.

**Presentation:** In packs of 12 Pills.



## Iksir Khawateen/Iksir Khawateen-SF

It regulates the secretory functions of the ovaries and abnormal menstrual periods and pregnancy. It acts directly on the uterine musculature and has an astringent and antiseptic effect on the mucus membrane of the urinogenital system. It has stimulating effect on the endometrium and the ovaries. It also eliminates distress and pain before and during menstruation, tones up the nerves, acts as a uterine tonic and regulates the development of female sexual characteristics. Also checks nonspecific leucorrhoea. Sugar Free (SF) option is also available with the same benefits.

**Composition:** Each dose of 10 ml contains: Potassium Nitrate Pure (Namak Shor) 20 mg, Juniperus communis (Abhal), Valeriana wallichii (Tagar), Withania somnifera (Ashwagandha), Ruta graveolens (Suddab), Gossypium indicum (Doda Kapas), Trigonella foenum-graecum (Methi), Tribulus terrestris (Gokhru), Rubia cordifolia (Majith), Cucumis melo (Post Kharbooza), Rheum emodi (Rewandchini), Satureja hortensis (Satar Pharsi), Apium graveolens (Ajmod), Cichorium intybus (Kasni), Carthamus tinctorius (Qurtum), Anethum sowa (Shibt) each 100 mg, Foeniculum vulgare (Badiyan) 200 mg, Rauwolfia serpentina (Asraul) 200 mg, Saraca indica (Ashoka) 800 mg, Sugar\* q.s.

**\* In Iksir Khawateen-SF Sugar is replaced with Sugar Free Base.**

**Indications:** Amenorrhoea, metritis, premenstrual syndrome, dysmenorrhoea, hypomenorrhoea, nonspecific leucorrhoea, metrorrhagia and menorrhagia.

**Dosage:** 10 ml daily. To be discontinued during menstruation.

**Presentation:** In PET bottles of 100 ml, 200 ml and 500 ml.



*Nature is our Laboratory*

## LeucoCure

It has a stimulatory action on the endometrium. Its tonic property improves uterine circulation and its antimicrobial and astringent actions on the mucus membrane of the genital system control leucorrhoea. It also improves general health and relieves the symptoms like itching, irritation, backache, stomachache, excessive urination, lethargy and debility associated with leucorrhoea.

**Composition:** Each 500 mg. capsule contains: Pistacia lentiscus (Mastagi), Cypraea moneta Calx. (Kushta Sadaf) each 25 mg, Anogeissus latifolia (Gule Dhawa), Qurecus infectoria (Mazu), Symplocos racemosa (Lodh Pathani), Mytilus margaritiferus (Marwareed) each 50 mg, Tamarix gallica (Mayee Kalan), Butea frondosa (Kamarkas) each 75 mg, Salmalia malabarica (Mochras) 100 mg

**Indications:** In leucorrhoea, relieves symptoms like itching, irritation, backache, stomachache, excessive urination, burning micturition, lethargy and debility associated with leucorrhoea.

**Contraindications:** During menses.

**Dosage:** 2 capsules twice a day with milk.

**Presentation:** In packs of 28 Capsules.



## Menso-P

It is a specially formulated herbal compound made for women during either their pre-menopausal and/or their menopausal stages. Many of the herbs used contain plant estrogens that are hormone regulators of natural progesterone and estrogen. Many common symptoms of menopause are hot flushes (sudden intense waves of heat and sweating), irritability, muscle pain, changes in sexual desire, night sweats, headaches, frequent urination, early wakening, vaginal dryness, mood changes, insomnia, conditions commonly associated with PMS, and weight gain. Menso-P is used to alleviate the onset of these symptoms and protect bone density by assisting bones to absorb calcium.

**Composition:** Each 500 mg. capsule contains: Pinus succinifera (Kahruba), Bambusa arundinacea (Tabasheer), Jade (Yashab), Serpent Stone (Zahar Mohra), Mytilus margaritiferus (Marwareed) each 35 mg, Butea frondosa (Gond Chunia), Symplocos racemosa (Lodh Pathani), Tamarix gallica (Kazmazaj) each 63 mg, Exceipient q.s.

**Indications:** Pre-menopausal and post-menopausal symptoms like irregular menstruation, vaginal itching or dryness, hot flushes, night sweats, palpitation, depression, headaches, irritability, insomnia, fatigue, weight gain, frequent urination, fluid retention and loss of libido.

**Dosage:** 2 capsules with milk twice a day. Best used for 6 months or more.

**Presentation:** In packs of 60 Capsules.



## ReguLate

It is a comprehensive approach to the management of irregular menstruation, primary and secondary amenorrhoea and oligomenorrhoea. It is non-hormonal herbal product which tones up the female generative organs and promotes regular menstruation.

**Composition:** Each 500 mg capsule contains: Crocus sativus (Zafran) 20 mg, Rubia cordifolia Ext. (Majeeth), Mesua ferrea Ext. (Nagkesar) each 50 mg, Juniperus communis Ext. (Abhal), Aloe barbadensis Latex (Aelwah), Commiphora myrrha Ext. (Murmuki), Ferula foetida (Heeng) each 75 mg, Ruta graveolens Ext. (Berg Suddab) 80 mg

**Indications:** Primary and secondary amenorrhoea, oligomenorrhoea and irregular menses.

**Dosage:** 1 capsule twice daily after meals with water.

**Presentation:** In packs of 14 Capsules.



## Selani

Recommended in leucorrhoea with vaginal pruritus, burning and discharge. Also useful in irritation, backache, stomachache, excessive urination, lethargy and debility due to leucorrhoea. Strengthens the uterus.

**Composition:** Each 750 g tablet contains: Rhus succedanea (Kakra Singhi) 350 mg, Quercus infectoria (Mazu Sabz) 350 mg, Binding Agent q.s.

**Indications:** Leucorrhoea with vaginal pruritus, burning and discharge, itching, irritation, backache, stomachache and excessive urination.

**Dosage:** 2 tablets in the morning on an empty stomach with a glass of milk. More effective if given with butter mixed in milk.



## Supari Pak Powder

Useful in leucorrhoea and excessive menstruation. Increases the retentive power of the uterus. Also useful in pain of the joints and back, weakness after delivery, vomiting and dyspepsia. Also increases retention power and density of semen in males.

**Composition:** Each 10 g contains: Cinnamom zeylanicum (Darchini), Elettaria cardamomum (Elaichi Choti), Mesua ferrea (Nagkesar), Cinnamomum tamala (Tejpat) each 3 mg, Piper longum (Pipal) 24 mg, Bambusa bambos (Bansalochan) 48 mg, Rubia cordifolia (Majith) 245 mg, Areca catechu (Chaliya) 489 mg, Clarified Butter (Ghee) 1.019 g

**Indications:** Leucorrhoea, excessive menstruation, pain of the



*Nature is our Laboratory*

joints and back, weakness after delivery, vomiting and dyspepsia.

**Contraindications:** During menses and from the ninth month of pregnancy to twenty days after delivery.

**Dosage:** In ordinary cases 5 to 10 g with warm milk before breakfast. In chronic cases, 5 to 10 g in the morning and evening with warm milk.

**Presentation:** In packs of 100 g.

## SINGLE HERBS

### Ashoka Capsules

It has been efficacious in regularising menstrual disturbances without producing any side effects. Its effect on the ovarian tissue may produce an estrogen-like activity that enhances the repair of the endometrium and stops bleeding. In metrorrhagia, in addition to decreasing the uterine bleeding, it regularises the interval between two cycles. Besides treating the symptoms of fatigue and generalised weakness, the use of the herb provides immense relief from painful menses, premenstrual syndrome and nonspecific leucorrhoea. It is well established for its effectiveness in dysmenorrhoea and tenderness of the uterus.

**Composition:** Each 250 mg capsule contains: Saraca indica Ext. (Ashoka) 250 mg

**Indications:** Amenorrhoea, Dysmenorrhoea, Leucorrhoea, Menorrhagia, Uterine/ovarian Fibroids and Uterine Prolapse

**Contraindications:** During pregnancy and lactation.

**Dosage:** 1 capsule two times a day.

**Presentation:** In packs of 60 capsules.

### Pambadana Capsules

It reduces menstrual bleeding and is useful in endometriosis, amenorrhoea and in the treatment of metrorrhagia specially when dependant on fibroids. Also increases milk flow of nursing mothers by increasing the secretory activity of the mammary gland. It also expels the placenta after birth.

**Composition:** Each 250 mg capsule contains: Gossypium herbaceum Ext. (Pambadana) 250 mg

**Indications:** Amenorrhoea, Diarrhoea, Dysentery, Dysmenorrhoea, Endometriosis, General Debility, Headache, Menorrhagia, Metrorrhagia, Oligospermia, Sexual Lassitude and Suppressed Post-partum Lactation.

**Dosage:** 1 or 2 capsule twice daily after meals.

**Presentation:** In packs of 60 capsules.

### Shatawari Capsules

Satawar is perhaps best known as a female rejuvenative. According to Ayurvedic texts, Shatavari means 'one who possesses hundred husbands'. It is useful for infertility, decreased libido, threatened miscarriage, menopause, leucorrhoea, menstrual cramps and has the ability to balance pH in the cervical area. It is used to control the symptoms of PMS, including breast tenderness and abdominal bloating, amenorrhoea, dysmenorrhoea, leucorrhoea and menopause. It is also useful in pelvic inflammatory disease like endometriosis. It also supports deeper tissue and builds blood and so it helps to remove infertility, prepare the womb for

for conception, prevent miscarriage and acts as a post-partum tonic where it helps to increase lactation and normalize the uterus and the changing hormones. It plays an important role in preserving women's long term health.

**Composition:** Each 250 mg capsule contains: Asparagus racemosus Ext. (Shatawari) 250 mg.

**Indications:** Amenorrhoea, Bilioussness, Blood Disorders, Bronchitis, Chronic Fevers, Cystitis, Decreased Libido, Dropsy, Dysmenorrhoea, Dyspepsia, Epilepsy, Erectile Dysfunction, Gastritis, Gout, Hyperacidity, Infertility in women, Kidney Dysfunction, Leprosy, Leucorrhoea, Menopausal Changes, Night Blindness, Premenstrual Syndrome (PMS), Rheumatism, Seminal Debility, Sexual Debility, Sore Throat, Spermatorrhoea, Stomach Ulcers, Suppressed Post-partum Lactation, Threatened Miscarriage, Tumors, Urinary Tract Infection (UTI) and Vaginal Dryness.

**Contraindications:** Not recommended in kidney dysfunction, diarrhoea and gout.

**Dosage:** 1 capsule twice daily before meals with water.

**Presentation:** In packs of 60 Capsules.

## OTHER PROPRIETARY & GENERICS

Besides the above, Dehlvi manufactures a number of proprietary and generic medicines that are useful in Synaecological Disorders. Some of them are : Arq Dashmool, Arq Zachcha, Dehlvi D. Ward Capsules, Dehlvi D.Ward-SF, Habbe Marwaridi, Habbe Mudir, Lacta-M, Majun Dabidul Ward, Majun Hamal Ambari Alvi Khani, Majun Mochras, Majun Muqavvi Reham, Majun Supari Pak, Marham Dakhliyun, Safuf Selan,



*Nature is our Laboratory*