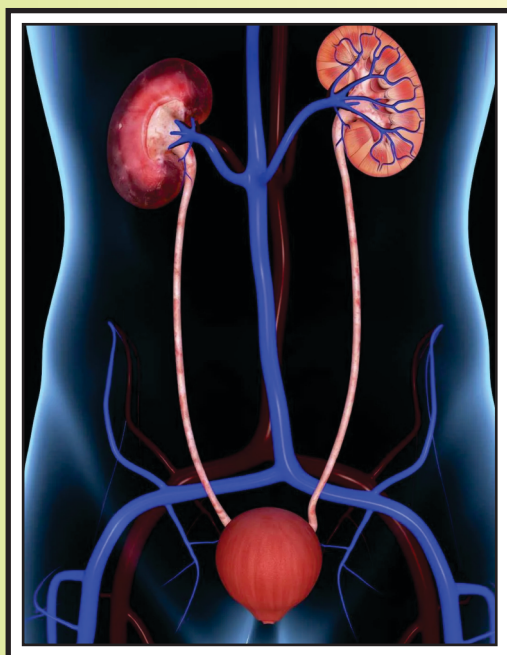


MOHSIN
DEHLVI



DEHLVI SPECIALITY SERIES-8

URINARY SYSTEM



DISORDERS



Dehlvi

Nature is our Laboratory

Dehlvi

The main function of the urinary system is the formation and excretion of urine. The kidneys are responsible for regulating the volume and composition of fluids in the body, often filtering several litres of fluid from the bloodstream every day. They filter the waste products generated by metabolic processes, such as uric acid, from the blood, and determine the levels of sodium and potassium in the body. Waste products as well as excess water are excreted as urine.

The kidneys are situated on either side of the backbone and are partly protected by the lower ribs. They are padded with fat to protect them from blows and to prevent them from moving about during breathing. Each kidney contains just over 1 million nephrons, or filtration units, in which the blood is purified.

Urinary disease comprises of several symptoms and disorders like cystitis, dysuria, prostate disorders and kidney disorders.

In modern system of medicine, the drugs often used in the treatment are antibiotics, antiinflammatory, alpha-blockers and surgery in cases of kidney stone.

These drugs are effective but have a number of side effects. In chronic cases, the treatment is obviously prolonged. The herbal system has a number of medicines that not only provide symptomatic relief but attacks the root cause without any known side effects. Dehlvi has many useful preparations to treat urinary system disorders.

Dehlvi Deenar-SF

All the goodness of Sharbat Dinar in a Sugar-Free form which is useful in hepatitis, enlargement of liver, oedema and pleurisy. Increases urination and removes obstructions from the liver.

Composition: Each dose of 25 ml contains: *Nymphaea alba* (Gule Nilofar), *Borago officinalis* (Berge Gaozaban) each 860 mg, *Rheum officinale* (Rewandchini) 1.15 g, *Cichorium intybus* Seed (Tukhme Kasni), *Rosa damascena* (Gule Surkh) each 1.58 g, *Cuscuta reflexa* (Tukhme Kasoos) 2.54 g, *Cichorium intybus* Root (Bekhe Kasni) 3.17 g, Sugar Free Base* q.s.

*Sorbitol & Water

Indications: Dysuria, Hepatitis, Hepatomegaly, Oedema and Pleurisy.

Dosage: 25 ml with 125 ml Arq Badiyan or water.

Presentation: In PET bottles of 200 ml and 500 ml.



Dehlvi Zaroon Sada Capsules

Jawarish Zaruni Sada is presented in a convenient capsule form. With all the goodness of Jawarish Zaruni Sada, Dehlvi Zaroon Sada Capsules meet the demands of this modernized age. Strengthens the kidneys, stomach, liver, intestines and urinary bladder. Aids digestion, relieves excessive urination and is useful in hydrospermia.

Composition: Each 500 mg. capsule contains: *Anacyclus pyrethrum* (Aqarqarah), *Cinnamomum zeylanicum* (Darchini), *Crocus sativus* (Zafran), *Pistacia lentiscus* (Mastagi), *Aquilaria agallocha* (Agar) each 14 mg, *Myristica fragrans* Aril (Jawitri) 15 mg, *Daucus carota* Seeds (Tukhme Gazar), *Apium graveolens* Seeds (Ajmod), *Trifolium alexandrinum* (Ispast), *Trachyspermum ammi* (Ajwain), *Foeniculum vulgare* (Badiyan), *Cucumis melo* Seeds (Tukhme Kharbuza), *Cucumis sativus* Seeds (Tukhme Kheera), *Apium graveolens* Bark (Ajmod), *Myrtus caryophyllus* (Laung), *Piper nigrum* (Kali Mirch) each 41.5 mg

Indications: Indigestion, excessive micturition, kidney dysfunction, liver dysfunction, and hydrospermia.

Dosage: 1 or 2 capsules in the morning with water.

Presentation: In packs of 26 Capsules.



Kuliah Bazoori-SF

It is a unique sugar free formulation, which assists the liver and kidneys to function in the normal way, maintaining these vital organs at the optimum healthy level. Purifies the blood by removing the contaminants from the circulating blood. Helps the liver to remove a number of toxic wastes, e.g., drugs, bacteria, parasites, food additives, chemicals, fats, alcohol, etc. It removes biliousness of liver, kidney and bladder by inducing excessive urination, and reduces fever caused by hepatic heat. It is useful in jaundice also. Prevents the formation of kidney stones and helps to



Nature is our Laboratory

dissolve the kidney and bladder stones too. Also acts as a diuretic. It normalizes urinary pH and alleviates burning during urination. It soothes an irritated and inflamed bladder due to its demulcent and anti-inflammatory activity. It is also useful in urinary tract infections.

Composition: Each 10 ml. contains: Chicorium intybus Root (Bekhe Kasni) Cucumis sativus Seed (Tukhme Kheera) each 1 gm, Chicorium intybus Seed (Tukhme Kasni), Cucumis melo Seed (Tukhme Kharbuza), Tribulus terrestris (Gokhru), Foeniculum vulgare Root (Badiyan) each 500 mg, Sugar Free Base q.s.

Indications: Biliousness, blood impurities, burning sensation during urination, decreased urination, fever due to hepatic heat, inflamed bladder, jaundice, sluggish liver, urinary calculi and urinary tract infections.

Dosage: 10 ml each in the morning and evening. Contraindicated in 1st trimester of pregnancy. Can be used in 2nd trimester but with caution.

Presentation: In PET bottles of 200 ml and 500 ml.



Prostate-BH

It is a comprehensive herbal formulation containing time-tested botanicals that are useful in the treatment of benign prostatic hyperplasia (BPH), or benign prostatic hypertrophy. It relieves the symptoms of BPH with reduction in prostate weight. It also improves urinary flow rate while reducing post-void residual urine. It also inhibits prostatic stromal proliferation.

Composition: Each 500 mg. capsule contains: Lactuca sativa (Tukhme Kahu), Crataeva nurvula (Varun Chhal) each 75 mg, Cucumis sativus (Tukhme Khayarain), Gossypium herbaceum (Maghze Binaula) each 100 mg, Tribulus terrestris (Gokhru) 150 mg.

Indications: Benign prostatic hypertrophy (BPH) and post-void residual urine.

Dosage: 2 capsules twice a day with water.

Presentation: In packs of 60 Capsules.



Shilajit Care

It is used in a great variety of diseases. It is specially employed as a general tonic in genitourinary diseases, diabetes, gall stones, jaundice, painful and bleeding piles, enlarged liver and spleen, dyspepsia, digestive disorders, menstrual problems, worms, renal and bladder calculi, nervousness, hysteria, anaemia and in bone fracture. It is also valuable in cases of diabetic albuminuria, excessive thirst, polyuria, burning sensation and exhaustion. It also stimulates the immune system.

Composition: Each dose of 10 ml contains: Asphaltum (Shilajit Resin) 2.5 ml, Fructooligosaccharides q.s.

Indications: Ascites, burning micturition, diabetes, fatigue, gallstones, general debility, low immunity, polyuria, and renal and bladder calculi.

Dosage: 10 ml in the morning and evening.

Presentation: In PET bottles of 200 ml and 500 ml.



Purity Assured



UniCal

It is useful in urinary calculi. It disintegrates the stone and flushes it out through the urinary tract. It also clears the excretion of certain substances formed due to metabolic dysfunction or poor diet that encourages kidney and bladder stone formation. Taken daily as a dietary supplement, UniCal keeps the kidneys and urinary tract flushed and working at optimum efficiency. It is especially helpful for persons with predisposing factors such as low urine output, high mineral content in diet and urinary crystalloid-colloid imbalance.

Composition: Each 500 mg. capsule contains: Asphaltum (Shilajit), Rubia cordifolia (Majith), Stone of Head of Fish (Sangsare Mahi) each 25 mg, Fossil Encrinite (Hajrul Yahud) 35 mg, Cyperus rotundus (Nagar Motha) 90 mg, Valeriana wallichii (Asaroon), Physalis alkekengi (Kaknaji), Mesua ferrea (Nagkesar) each 100 mg

Indications: Kidney and urinary bladder stones, kidney gravel, burning micturition, and water retention.

Dosage: 1 capsule twice daily with plenty of water.

Presentation: In packs of 60 Capsules.



SINGLE HERBS

Gokhru Capsules

It is known to manage diuretic activities in the body and has a cleaning effect on the urinary bladder that may lead to relief from various urinary problems. It contains plenty of lithotriptic activity which may help to regulate the functioning of the urinary bladder.

Composition: Each 250 mg. capsule contains: Tribulus terrestris Ext. (Gokshura) 250 mg.

Indications: Dysuria, calculus affections, cystitis, incontinence of urine, kidney dysfunction, renal discomfort and urolithiasis.

Dosage: 1 or 2 capsule twice daily after meals with water.

Presentation: In packs of 60 Capsules.

Kulthi Capsules

It is known to manage diuretic activities in the body and has a cleaning effect on the urinary bladder that may lead to relief from various urinary problems. It contains plenty of lithotriptic activity which may help to regulate the functioning of the urinary bladder.

Composition: Each 250 mg. capsule contains: Tribulus terrestris Ext. (Gokshura) 250 mg.

Indications: Dysuria, calculus affections, cystitis, incontinence of urine, kidney dysfunction, renal discomfort and urolithiasis.

Dosage: 1 or 2 capsule twice daily after meals with water.

Presentation: In packs of 60 Capsules.



Nature is our Laboratory

Punarnava Capsules

Useful in oedema, biliousness, hepatitis, ascites, scanty urine and kidney stone. It has also been widely used for the treatment of dyspepsia, jaundice, enlargement of spleen and abdominal pain.

Composition: Each 250 mg. capsule contains: Boerhavia diffusa Ext. (Punarnava) 250 mg

Indications: Oedema, biliousness, hepatitis, ascites, scanty urine and kidney stone.

Dosage: 2 capsules twice daily before meals with water.

Presentation: In packs of 60 Capsules.

Shilajit Capsules

It is used in a great variety of diseases. It is specially employed as a general tonic in genitourinary diseases, diabetes, gall stones, jaundice, painful and bleeding piles, enlarged liver and spleen, dyspepsia, digestive disorders, menstrual problems, worms, renal and bladder calculi, nervousness, hysteria, anaemia and in bone fracture. It is also valuable in cases of diabetic albuminuria, excessive thirst, polyuria, burning sensation and exhaustion. It also stimulates the immune system.

Composition: Each 500 mg. capsule contains: Asphaltum Ext. (Shilajit) 500 mg.

Indications: Ascites, burning micturition, diabetes, fatigue, gallstones, general debility, low immunity, polyuria, and renal and bladder calculi.

Dosage: 1 or 2 capsules twice daily after meals with water.

Presentation: In packs of 30 Capsules.

OTHER PROPRIETARY & GENERICS

Besides the above, Dehlvi manufactures a number of proprietary and generic medicines that are useful in Urinary System Disorders. Some of them are : Banadequl Bazoora, Dehlvi Falasafeen Capsules, Dehlvi Falasafeen-SF, Habbe Salajit, Iksir Gurda, Jawarish Zaruni Ambari Banuskha Kalan, Jawarish Zaruni Sada, Kushta Baiza Murgh, Kushta Hajrul Yahud, Kushta Zaarrud, Majun Aqrab, Majun Falasfa, Majun Hajrul Yahud, Majun Kundur, Majun Masikul Bol, Majun Sangsare Mahi, Qurs Dawai Gurda, Safuf Indri Jullab, Sharbat Aloo Baloo, Sharbat Bazoora Motadil, Sharbat Dinar, Zaitoon Sirka.

Purity Assured

