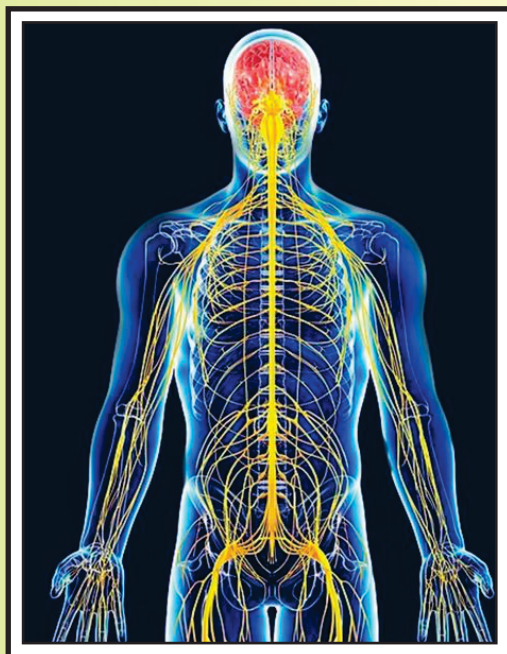


MOHSIN  
DEHLVI

DEHLVI SPECIALITY SERIES-3

# NERVOUS SYSTEM



# DISORDERS



Dehlvi

Nature is our Laboratory

Dehlvi

*Over 95 years of Tradition & Trust Continues*

The Nervous System is divided into: The Central Nervous System and the Peripheral Nervous System. The central nervous system is divided into two parts: the brain and the spinal cord. The peripheral nervous system is divided into two major parts: the somatic nervous system and the autonomic nervous system. The somatic nervous system consists of peripheral nerve fibers that send sensory information to the central nervous system and motor nerve fibers that project to skeletal muscle. The autonomic nervous system controls smooth muscle of the viscera (internal organs) and glands.

The Brain is the most complex organ in the human body. It is involved in everything you do. How you think, how you feel, how you act, and even how you interact with others. Your brain even affects the kind of person you are, including the kind of parent, child, sibling, friend, student and employee you are. When your brain works right, you can work right; and when your brain doesn't work right it is very hard for you to be your best. It weighs about 1.3 to 1.4 Kg (or 2% of body weight) and consumes about 20-30% of the body's energy (this means it uses about 20-30% of the calories you eat). There are about 100 billion neurons in the brain and each neuron or nerve cell is connected to other nerve cells in the brain, by sometimes hundreds or even thousands of connections, called dendrites. It is estimated that there are over 1,000,000,000,000,000 connections in brain, more connections than there are stars in universe. The spinal cord is about 43 cm long in adult women and 45 cm long in adult men and weighs about 35-40 grams. The vertebral column, the collection of bones (back bone) that houses the spinal cord, is about 70 cm long. Therefore, the spinal cord is much shorter than the vertebral column.

Nervous system disorders comprise of several symptoms and disorders like dementia, delirium, epilepsy, headache, meningitis, migraine, vertigo, anxiety, stress, depression, cerebral atony, motor neurone disease, paralysis, chorea, multiple sclerosis, melancholia, sciatica, parkinson's disease, insomnia, amnesia, fatigue, and neuralgia.

In modern system of medicine, the drugs often used in the treatment are sedatives, anxiolytics, corticosteroids, hypnotics, antidepressants, antipsychotics, antimanics, analgesics, antidepressants and stimulants.

These drugs are effective but have a number of side effects like stiffness, weight-gain, blurred vision, heart-burn, stomach pain, slowed thinking, etc. In chronic cases, the treatment is obviously prolonged. The herbal system has a number of medicines that not only provide symptomatic relief but attacks the root cause without any known side effects. Dehlvi has many useful preparations to treat nervous system disorders.

## Amleena

Contains natural vitamins and is specially rich in Vitamin C. Also contains carbohydrates, proteins and minerals which provide energy and supplement Protein Energy Malnutrition (PEM). The special herbal formula provides required sedative elements that relax strained muscles and soothe whole body. Ideal for people involved in academic activities such as students, scientists, advocates, accountants and engineers. The prolonged mental exercise leaves sort of vacant mindedness and induces heaviness, sure signs of mental fatigue. It is beneficial for sportsmen, labourers, housewives, etc., who need lots of muscular energy. Also recommended in loss of memory, stress, strain and fatigue, lassitude, inertness and apathy, insomnia, anorexia, weakness of eyesight and bronchitis.



**Composition:** Each 20 gms contains: Withania somnifera (Ashwagandha), Alpinia galanga (Khulanjan), Evolvulus alsinoides (Shankhpushpi) each 500 mg, Centella asiatica (Brahmi) 900 mg, Pandanus odoratissimum Dist. (Arq Kewra) 0.1 ml, Zingiber officinale Juice (Adrak) 1 g, Prunus amygdalus (Badam) 2 g, Daucus carota (Gajar) 3 g, Emblica officinalis Pulp (Amla) 6 g, Sugar q.s.

**Indications:** Amnesia, stress, strain, lassitude, inertness and apathy, insomnia, lack of appetite, weakness of eyesight and bronchitis.

**Dosage:** 20 g in the morning with breakfast.

**resentation:** Packs of 300 g.

## Braini

Braini has been created especially for those people whose day-to-day activities demand high mental energy. Such persons as advocates, students, accountants, engineers and the scientists who, after long hours of brain activity feel a sensation of heaviness or vacant-mindedness, which are sure signs of mental fatigue. Also, is equally good for the people whose job requires a lot of muscular energy like sportsmen, manual workers, housewives, etc. It replenishes the lost energy and relieves mental tension. By providing strength it creates desire for more work and increases efficiency. It is a blend of the choicest herbs like BRAHMI (which has a proven track record of efficiency in improving brain faculties.). It provides natural vitamins, minerals, carbohydrates and trace elements.



**Composition:** Each dose of 20 g. contains: Alpinia galanga (Khulanjan) 200 mg, Evolvulus alsinoides (Sankhaholi) 250 mg, Bacopa monnieri (Brahmi) 500 mg, Zingiber officinalis Juice (Sonth) 1 ml, Prunus amygdalus (Badam) 2 gm, Juglans regia (Akhrot) 2 gm, Pandanus odoratissimum Dist. (Arq Keora) 0.3 ml, Elettaria cardamomum Oil (Elaichi) 0.3 ml, Emblica officinalis Pulp (Amla) 2 g, Phoenix dactylifera Pulp (Khajur) 8.5 g, Silver Leaves (Warq Nuqra) 10 mg, Sugar q.s.



*Nature is our Laboratory*

**Indications:** Mental fatigue after long hours of study or other sorts of mental activity, a sense of vacant-mindedness, forgetfulness, disinclination to work, senile dementia, depression, dullness, inactivity and sluggishness, lack of urge to take initiative and drive, general debility, loss of appetite, muscular strain or weakness and anxiety and stress during examinations.

**Dosage:** 20 g in the morning with breakfast.

**Presentation:** In packs of 300 g.

## Calm-DN

It reduces chronic and nervous anxiety without any side-effects. Contains herbs that help with stress relief by supporting the adrenal glands, brain and metabolism to overcome the accumulation of biological stress. Calm-DN restores mental peace and induces natural sleep. Also restores coordination of body and mind.

**Composition:** Each 500 mg capsule contains: Centella asiatica (Brahmi), Lavandula stoechas (Dharu), Piper nigrum (Kali Mirch), Evolvulus alsinoides (Shankapushpi) each 50 mg, Rauwolfia serpentina (Asraul) 300 mg

**Indications:** Chronic and nervous anxiety, generalized anxiety disorder (GAD), panic disorder and agorophobia, social anxiety disorder, behavioural disorders, emotional disturbances, anxiety associated with depressive symptoms, insomnia, irritability and hyperactivity and aggressiveness in children.

**Dosage:** 1 or 2 capsules twice daily after meals with water. Children above the age of 6 should be given 1 capsule twice a day. Use of this product at the recommended dosage should be continued as long as the above mentioned indications are present. As symptoms subside, begin to reduce dosage accordingly. Maintain product use for some weeks even if no further symptoms are present. Do not exceed recommended dosage.

**Presentation:** In packs of 28 Capsules.



## Dehlvi Ambar Shilajit

Nourishes the central nervous system - the brain and the spinal cord. It improves blood circulation and is useful in general debility and lethargy.

**Composition:** Each 500 mg. capsule contains: Castoreum (Jund) 10 mg, Ambra grasea (Ambar) 15 mg, Asphaltum (Shilajit) 475 mg

**Indications:** Weakness of nerves specially the spinal cord, general debility and lethargy.

**Dosage:** 1 or 2 capsules a day.

**Presentation:** In packs of 10 Capsules.



Click



## Dehlvi Asab Plus

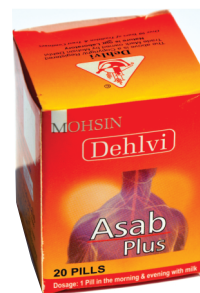
It is a good reinforcer of the central nervous system, and therefore it can help improve cases of depression, lethargy, anxiety, stress, apathy, sexual debility, general debility and lack of appetite. Increases the rigidity of the male sexual organ.

**Composition:** Each 500 mg silver coated pill contains: Nuxvomica Detoxified (Kuchla), Cypraea moneta Calx. (Kushta Sadaf) each 7.35 mg, Pastinaca secacul (Shaqaul Misri), Allium cepa (Tukhme Piaz), Allium ascalonicum (Tukhme Gandana), Zingiber officinale (Sonth), Brucea sativa (Tukhme Jirjir), Phoenix dactylifera (Khurma) each 29.4 mg, Orchis latifolia (Salab Punja) 58.4 mg

**Indications:** General debility, lethargy, weakness of nerves, depression, anxiety, stress, apathy and lack of appetite.

**Dosage:** 1 pill in the morning and evening with warm milk.

**Presentation:** In packs of 20 Pills and 40 Pills.



## Dehlvi Gaozabani Ambari Jadwari-SF

Khamira Gaozaban Ambari Jadwar Ud Saleeb Wala is presented in a revolutionary sugar free form. With all the goodness of Khamira Gaozaban Ambari Jadwar Ud Saleeb Wala, Dehlvi Gaozabani Ambari Jadwari-SF meets the demands of this modernized age. Specially useful in epilepsy. Also useful in paralysis, facial paralysis, infantile epilepsy, chorea and hysteria. Strengthens the brain and nerves.

**Composition:** Each dose of 5 g contains: Ambra grasea (Ambar) 6.96 mg, Argentum Leaf (Warq Nuqra) 20.88 mg, Borago officinalis (Gule Gaozaban), Coriandrum sativum (Kishniz Khushk), Bombyx mori (Abresham), Centaurea behen (Behman Safed), Salvia haematodes (Behman Surkh), Santalum album (Sandal Safed), Salvia aegyptiaca (Tukhme Balango), Ocimum sanctum (Tukhme Faranjmushk), Melissa parviflora (Badranjboya), Lavandula stoechas (Ustkhuddus), Lepidium iberis Red (Tudri Surkh), Lepidium iberis White (Tudri Safed), Delphinium denudatum (Jadwar), Paeonia officinalis (Ud Saleeb) each 34.80 mg, Borago officinalis (Gaozaban) 104.39 mg, Sorbitol 1.740 g, Fructooligosacchrides Pdr. 2.610 g

**Dosage:** 5 g in the morning on an empty stomach with a glass of milk.

**Indications:** Epilepsy, paralysis, facial paralysis, infantile epilepsy, chorea, hysteria, cerebral atony and nervous debility.

**Dosage:** 5 g in the morning on an empty stomach with a glass of milk.

**Presentation:** In packs of 60 g and 125 g.



Nature is *our* Laboratory

## Dehlvi Gaozabani Ambari Jawahri-SF

Khamira Gaozaban Ambari Jawaharwala is presented in a revolutionary sugar free form. With all the goodness of Khamira Gaozaban Ambari Jawaharwala, Dehlvi Gaozabani Ambari Jawahri-SF meets the demands of this modernized age. A famous Unani Tibbi medicine. An invigorating tonic for the brain and heart. Its quick effect removes general debility and melancholia. It is very useful for those who do excessive mental work. Improves eyesight and memory.

**Composition:** Each dose of 5 g contains: *Ambragraea* (Ambar) 7.35 mg, *Mytilus margaritiferus* (Marwareed), *Rubianus* (Yaquut), *Emerald* (Zamarrud), *Serpent Stone* (Zahar Mohra) each 16.55 mg, *Argentum Leaf* (Warq Nuqra) 21.17 mg, *Coriandrum sativum* (Kishniz Khushk), *Bombyx mori* (Abresham), *Centaurea behen* (Behman Safed), *Santalum album* (Sandal Safed), *Salvia aegyptiaca* (Tukhme Balango), *Ocimum sanctum* (Tukhme Faranjimushk) each 36.77 mg, *Boerhaavia officinalis* (Gule Gaozaban) 55.16 mg, Sorbitol 1.834 g, Fructooligosaccharides Pdr. 2.752 g, *Rosa damascena* (Arq Gulab) q.s.

**Indications:** Cerebral atony, weakness of the heart, general debility, melancholia, weakness of eyesight and amnesia.

**Dosage:** 5 g in the morning on an empty stomach or as and when required.

**Presentation:** In packs of 60 g and 125 g.



## Depresonil

It is a unique blend of natural herbs that help quell feelings of depression, anxiety, apathy, sleep disturbances, insomnia, anorexia, and feelings of worthlessness. Also may help to induce a feeling of calm, diminishes oversensitivity, improve mood, enhance well being and sociability, relieve pain, fatigue and also improve mental alertness. It is more easily tolerated than prescription antidepressants because it is 100% natural and has no side effects.

**Composition:** Each 500 mg capsule contains: *Glycyrrhiza glabra* (Mulethi), *Nepeta cataria* (Billilotan), *Valeriana wallichii* (Asaroon), *Nardostachys jatamansi* (Balcharr) each 50 mg, *Withania somnifera* (Ashwagandha) 75 mg, *Lavandula stoechas* (Ustkhuddus) 100 mg, *Mucuna pruriens* (Konch) 125 mg

**Indications:** Depression, anxiety associated with depressive symptoms, mood disturbances, depression with insomnia, recurrent depression and manic depressive psychosis in depressive phase and obsessive thoughts.

**Dosage:** 1 or 2 capsules twice daily after meals with water. Continue use of this product at the recommended dosage as long the above mentioned indications are obviously present. As symptoms subside, begin to reduce dosage accordingly.

**Presentation:** In packs of 28 Capsules



Purity Assured



## EpiCap

It is a good reinforcer of the central nervous system, and therefore it can help improve cases of depression, lethargy, anxiety, stress, apathy, sexual debility, general debility and lack of appetite. Increases the rigidity of the male sexual organ.

**Composition:** Each 500 mg silver coated pill contains: Nux-vomica Detoxified (Kuchla), Cypraea moneta Calx. (Kushta Sadaf) each 7.35 mg, Pastinaca secacul (Shaqaquul Misri), Allium cepa (Tukhme Piaz), Allium ascalonicum (Tukhme Gandana), Zingiber officinale (Sonth), Brucea sativa (Tukhme Jirjir), Phoenix dactylifera (Khurma) each 29.4 mg, Orchis latifolia (Salab Punja) 58.4 mg

**Indications:** General debility, lethargy, weakness of nerves, depression, anxiety, stress, apathy and lack of appetite.

**Dosage:** 1 pill in the morning and evening with warm milk.

**Presentation:** In packs of 20 Pills and 40 Pills.



## Fine Sleep

A perfect blend of natural oils which help to release everyday stresses and strains. Regular use for a few days will encourage a peaceful and restful sleep. Also useful in headaches.

**Composition:** Each 10 ml contains: Lactuca sativa Oil (Roghan Kahu), Cucurbita maxima Oil (Roghan Kadu), Sweet Almond Oil (Roghan Badam Shirin), Rosa damascena Oil (Roghan Gul), Poppy Seed Oil (Roghan Khashkhash) each 2 ml

**Indications:** Insomnia and Headaches

**Usage:** Rub gently on the scalp and forehead. Instill a drop or two in the nose and ears.

**Presentation:** In bottles of 50 ml.



## Habbe Asab Nuqrai

Strengthens nerves and brain. Useful in paralysis, facial paralysis and chorea.

**Composition:** Each 200 mg. silver coated pill contains: Cinnamomum zeylanicum (Darchini), Myristica fragrans Nut (Jaiphal), Myristica fragrans Aril (Jawitri), Paeonia officinalis (Ud Saleeb) each 33.27 mg, Nux-vomica Detoxified (Kuchla Mudabbir) 66.52 mg

**Indications:** Depression, lethargy, anxiety, stress, sexual debility, paralysis, facial paralysis and chorea.

**Dosage:** 1 or 2 pills in the morning and evening with milk.

**Presentation:** In packs of 20 pills.



*Nature is our Laboratory*

## MemoRise

It contains an ideal combination of time-tested, clinically proven ingredients that help increase the level of neurotransmitters, particularly acetyl-choline, and improve blood flow to the brain, thereby increasing its oxygen and nutrient supply, which will aid brain function and memory. It has been developed especially for those people whose day-to-day activities demand high mental energy. It replenishes lost energy and relieves mental tension. By providing strength it creates desire for more work and increases efficiency. It is a blend of the choicest herbs like BRAHMI (which has a proven track record of efficiency in improving brain faculties). The mentally fatigued and elderly can reduce frustrating bouts of forgetfulness.



**Composition:** Each 500 mg capsule contains: Z i n g i b e r officinale Ext. (Sonth), Celastrus paniculatus (Malkangani), Emblica officinalis (Amla), Nardostachys jatamansi Ext. (Balcharr), Piper nigrum (Kali Mirch) each 50 mg, Centella asiatica Ext. (Brahmi) 125 mg, Evolvulus alsinoides Ext. (Shankapushpi) 125 mg.

**Indications:** Mental fatigue after long hours of study or other sorts of mental activity, a sense of vacant-mindedness, forgetfulness, disinclination to work, senile dementia, depression, dullness, inactivity and sluggishness, lack of urge to take initiative and drive, general debility, loss of appetite due to sluggish body processes, muscular strain or weakness and anxiety and stress during examinations.

**Dosage:** 2 capsules twice daily with meals. Continue use of this product at the recommended dosage as long the above mentioned indications are obviously present. Maintain product use for some weeks even if no further symptoms are present. Do not exceed recommended dosage.

**Presentation:** In packs of 60 Capsules.

## MigraCap

Useful in migraine which consists of a severe, throbbing headache, usually located on one side of the head. The pain begins suddenly in and around the eye or temple, spreading to one or both sides of the head and often accompanied by loss of appetite, nausea, vomiting, sensitivity to sound, light and smell, or dislike for food.



**Composition:** Each 500 mg capsule contains: Each 500 mg capsule contains: Terminalia chebula, Yellow (Post Halela Zard), Terminalia chebula, Brown (Post Halela Kabuli), Terminalia chebula, Black (Post Halela Kabuli), Terminalia belerica (Post Balela), Emblica officinalis (Amla), Cassia angustifolia (Berge Sana), Ipomoea turpethum (Turbud Safed), Polypodium vulgare (Bisfayej), Pistacia lentiscus (Mastagi), Cuscuta reflexa (Aftimoon), Coriandrum sativum (Kishniz), Piper nigrum (Filfil Siah), Zingiber officinale (Zanjbeel) each 25 mg, Lavandula stoechas (Ustkhuddus) 175 mg.

**Indications:** Throbbing headaches and migraine.

**Dosage:** 1 or 2 capsules twice daily with water, once preferably before sunrise.

**Presentation:** In packs of 60 Capsules.

Purity Assured



## Roghan Arba

Removes dryness and gives a cool feeling to the brain. Useful in chronic insomnia. Regular use for a few days will result in a sound sleep. Also useful in headaches.

**Composition:** Each 10 ml contains: Lactuca sativa Oil (Roghan Kahu), Cucurbita maxima Oil (Roghan Kadu), Sweet Almond Oil (Roghan Badam Shirin), Rosa damascena Oil (Roghan Gul) each 2 ml

**Indications:** Insomnia and Headaches.

**Usage:** Rub gently on the scalp and forehead. Instill a drop or two in the nose and ears.

**Presentation:** In packs of 25 ml and 50 ml.



## Stresonil

It is a blend of herbs that are highly esteemed as rejuvenators. Useful in stress and anxiety. Restores normalcy after a long-term illness or stress. Common signs of stress are irritability, anxiety, headaches, mood fluctuations, depression, digestive trouble, heart palpitations, weakened immune system, higher cholesterol levels, migraine headaches, muscle aches and sleep disorders. If stress is not handled properly, then more serious illnesses will result. Stresonil is not habit forming nor there are any withdrawal symptoms.

**Composition:** Each 500 mg capsule contains: Each 500 mg capsule contains: Nepeta cataria (Badranj Boya), Ocimum sanctum (Tulsi) each 50 mg, Centella asiatica (Brahmi), Lavandula stoechas (Ustkhuddus) each 75 mg, Nardostachys jatamansi (Balcharr) 100 mg, Withania somnifera (Ashwagandha) 150 mg

**Indications:** Stress, anxiety, depression, insomnia, mental irritability, mood fluctuations, restlessness and nervous tension.

**Dosage:** 1 or 2 capsules twice daily with water. Continue use of this product at the recommended dosage as long the above mentioned indications are obviously present. As symptoms subside, begin to reduce dosage accordingly. Maintain product use for some weeks even if no further symptoms are present. Do not exceed recommended dosage.

**Presentation:** In packs of 28 capsules.



*Nature is our Laboratory*



## SINGLE HERBS

### Aqarqarah Capsules

It is given in paralysis, hemiplegia, epilepsy, chorea and is also given to help ease neuralgia and rheumatism.

**Composition:** Each 500 mg capsule contains: Anacyclus pyrethrum Extract (Aqarqarah) 167 mg, Anacyclus pyrethrum Powder (Aqarqarah) 333 mg

**Indications:** Paralysis, hemiplegia, epilepsy, chorea, neuralgia and rheumatism.

**Dosage:** 1 capsule twice daily before meals with water.

**Presentation:** In packs of 30 Capsules.

### Babuna Capsules

It has the ability to soothe the nerves and promote more restful sleep. It also reduces anxiety and induces a state of pleasant relaxation without disrupting normal function or interfering with motor coordination. It has also been safely used to calm restless children.

**Composition:** Each 250 mg. capsule contains: Anthemis nobilis Ext. (Babuna) 250 mg.

**Indications:** Anxiety, General Debility, Headache, Hyperactivity, Hysteria, Insomnia, Irritability, Nervous Debility, Nervousness, Oedema, Persistent Infection due to Low Immunity, Restlessness, Stress and Tension.

**Dosage:** 1 capsule twice daily with water before meals.

**Presentation:** In packs of 60 Capsules.

### Brahmi Capsules

The herb has been in use for almost 3000 years in Unani, Ayurvedic and Chinese medicines. It is a classic brain and nervine tonic. It contains many nutrients that support the body's vitality and feed the nervous system, including vitamins A, B, E and K, and magnesium. Brahmi is considered the main rejuvenating herb for nerve and brain cells and, therefore, has played a very important role for the treatment of cognitive disorders of aging. Countless studies have shown Brahmi helps improve protein activity and protein synthesis, especially in brain cells, which can increase intelligence, longevity and memory and decrease senility and aging. It is most commonly used as a nervine tonic that enhances learning and academic performance, improves mental alertness, sharpens short-term and long-term memory, rectifies speech disorders, increase concentration and intellectual ability in children.

**Composition:** Each 250 mg capsule contains: Centella asiatica Ext. (Brahmi) 250 mg.

**Indications:** Alzheimer's Disease, Amnesia, Anxiety, Depression, Epilepsy, Hyperactivity in Children, Hypertension, Hysteria, Insomnia, Lack of Concentration, Nervous Disorders, Neuralgia, Restlessness, Schizophrenia, Speech Disorder and Stress.

**Dosage:** 1 capsule twice daily with water at mealtimes.

**Presentation:** In packs of 60 Capsules.

## Shankapushpi Capsules

It increases mental faculties such as memory, intellect and alertness. It is used to cure insomnia, irritability as well as epilepsy, as it has a relaxing effect on the brain. It is a natural tranquilliser that promotes deep and revitalising sleep. Recommended where the mind becomes overactive, agitated and restless.

**Composition:** Each 250 mg. capsule contains: *Evolvulus alsinoides* Ext. (Shankapushpi) 250 mg

**Indications:** Amnesia, anxiety, epilepsy, general debility, hypertension, insomnia, irritability, nervousness, restlessness and stress.

**Dosage:** 1 capsule twice daily before meals with water.

**Presentation:** In packs of 60 Capsules.

## Tagar Capsules

It is prescribed as a remedy for anxiety, mental strain, hysteria, hypochondriasis, nervous unrest, lack of concentration, excitability, and emotional troubles and problems of menopause. It was first recommended for insomnia by Galen (Jalinus). It reduces mental over-activity and nervous excitability, helping people who find it hard to 'switch off'. It is beneficial for almost any stress-related condition, and, in general, has a calming, rather than directly sedative, effect on the mind. It is sometimes referred to as a "daytime sedative" because it can improve performance, concentration and memory during the day as well as help one to sleep better during the night. It is a useful remedy for insomnia, whether caused by anxiety or overexcitement. It also gives relief in muscle spasms and lowers blood pressure caused by stress and anxiety.

**Composition:** Each 250 mg. capsule contains: *Valeriana wallichii* Ext. (Asaroon) 250 mg

**Indications:** Aggression, anxiety, confusion, depression, epilepsy, excitability, headache, hyperactivity in children, hypochondriasis, hypertension, hysteria, insomnia, irritability, lack mental strain, migraine, nervous debility, nervous excitability, palpitation, panic, phobias, restlessness, stress and tension.

**Contraindications:** During pregnancy. Not advised for children under 12 years of age.

**Dosage:** 1 capsule twice daily after meals with water. In cases of insomnia 2 capsules 1 hour before bedtime. Do not use at the same time with any other drug having sedative properties.

**Presentation:** In packs of 60 Capsules.

## OTHER PROPRIETARY & GENERICS

Besides the above, Dehlvi manufactures a number of proprietary and generic medicines that are useful in Nervous System Disorders. Some of them are Ashwagandha Capsules/Tablets, Asraul Capsules, Dehlvi Itrefal Jaroob Dimagh-SF, Dawa-ush-Shifa, Dehlvi Jaroob Dimagh (Ustkhuddus) Capsules, Habbe Ayarij, Habbe Azaraqi, Habbe Banafsha, Habbe Sara, Habbe Shifa, Itrefal Kishnizi, Irefal Muqavvi Dimagh, Itrefal Ustkhuddus, Itrefal Zamani, Khamira Gaozaban Ambari, Khamira Gaozaban Ambari Jadwar Ud Saleeb Wala, Khamira Gaozaban Ambari Jawaharwala, Khamira Gaozaban Sada, Kushta Marjan Jawahar, Lavender Capsules, Majun Azaraqi, Majun Jograj Guggul, Majun Lana, Majun Nijah, Majun Talkh, Qurs Musakkin, Roghan Badam Shirin, Roghan Banafsha, Roghan Gul, Roghan Kaddu, Roghan Kahu, Roghan Keemia, Roghan Khashkhash, Roghan Labub Saba, Roghan Malkangani, Roghan Suranjan, Roghan Surkh, Sharbat Ahmed Shahi, Sharbat Keora, Sharbat Nilofar and Sharbat Sandal.



*Nature is our Laboratory*